

|| GÜZEL  
TOWERS

BY TIGER PROPERTIES



Tiger Properties is a leading real estate development company in Dubai. With a 120+ million square feet built-up area, Tiger Properties has over 270+ towers, including residential, retail, and hospitality. Presenting our new architectural jewel in Jumeirah Village Triangle.

An architectural rendering of the Güzel Towers at night. The image shows two tall, slender towers connected by a central structure, with a swimming pool visible between them. The towers are illuminated from within, and the base of the building features a modern, glass-fronted entrance. The surrounding area includes a street with cars and some landscaping. The overall scene is set against a dark background, emphasizing the lights of the building.

# || GÜZEL

## TOWERS

Güzel Towers, an architectural marvel by Tiger Properties, features twin high-rise towers connected by a stunning central swimming pool. Located in the heart of Jumeirah Village Triangle, this luxurious development combines modern sophistication with serene design, offering residents unparalleled amenities and a lifestyle of elegance.

**A Masterpiece**  
*of Architecture*



Guzel Towers

# Project Details

Project Type

**Luxury Residential**

Parking:

**6 Floors**

**Block A**

**26 Floors**

Studio : 149

1 Bedroom : 75

2 Bedroom : 48

**Block B**

**26 Floors**

Studio : 120

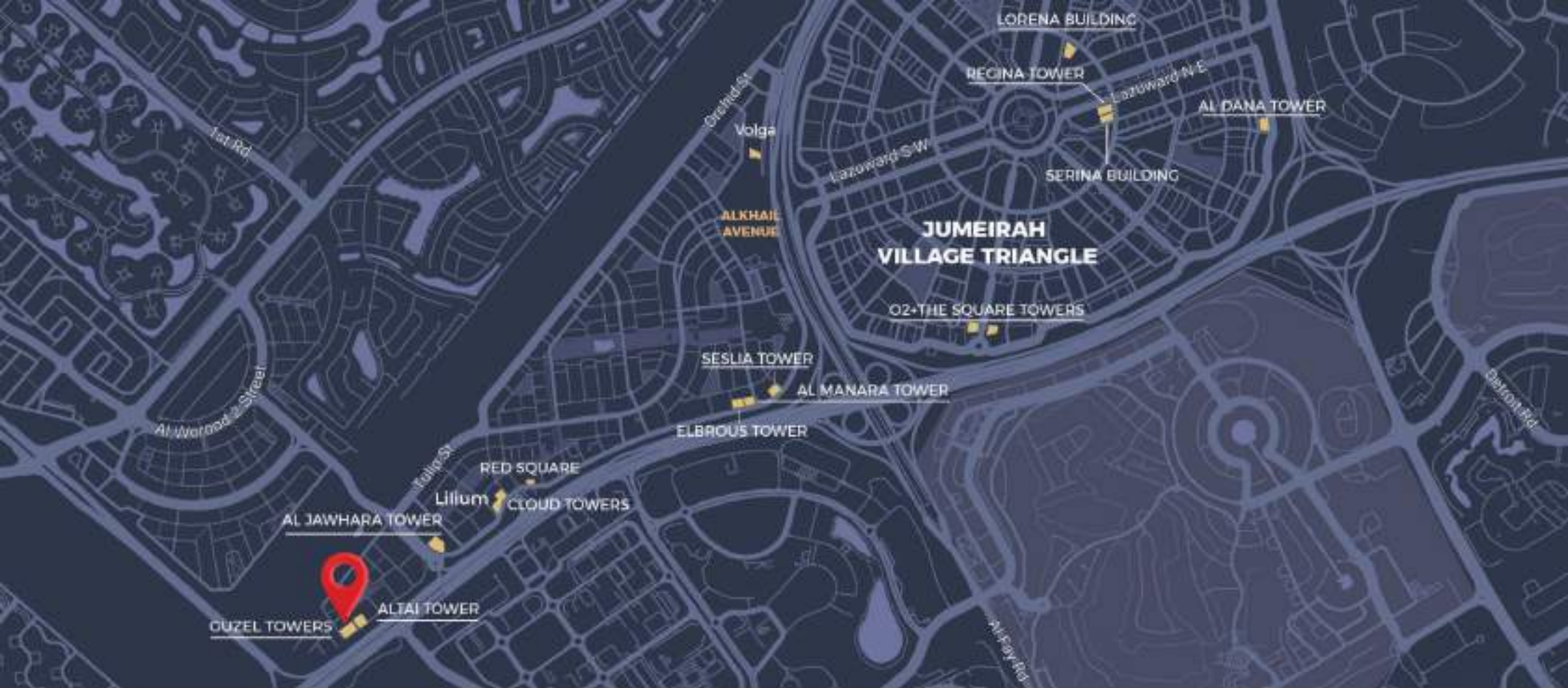
1 Bedroom : 60

2 Bedroom : 40

## Facilities

- Swimming Pool
- Kids Play Area
- Gym
- Barbecue Area
- Jogging Track
- Jacuzzi/ Spa





**Connected Living**  
*Prime Location*

 **12** Minutes to Circle Mall


 **15** Minutes to Palm Jumeirah


 **18** Minutes to Dubai Marina

 **12** Minutes to Al Khail Metro

 **17** Minutes to Mall of Emirates

 **21** Minutes to Global Village

 **13** Minutes to JBR

 **19** Minutes to Dubai Hills Mall

 **28** Minutes to Dubai Mall

Location

# Why JVT?

Jumeirah Village Triangle (JVT) combines suburban peace with city convenience. Surrounded by greenery and parks, it offers villas, townhouses, and apartments, making it ideal for families. With easy access to major highways, JVT ensures a connected and comfortable lifestyle in Dubai.





**A Life of Comfort**  
*World-Class Amenities*



Swimming  
Pool



Barbecue  
Area



Gym &  
Health Club



Jogging  
Track



Kids Play  
Area



Jacuzzi &  
Spa



## **Invigorating Oasis** *Refreshing Retreat*

The swimming pool serves as a stunning centerpiece, offering a tranquil escape for relaxation. Surrounded by lush landscaping, this inviting oasis features comfortable lounging areas and crystal-clear waters, making it perfect for a refreshing dip or sunbathing.



**Path of Vitality**  
*Jogging Track*



**Little Adventures**  
*Kids Play Area.*

**In every Ripple**  
*Love Awaits*

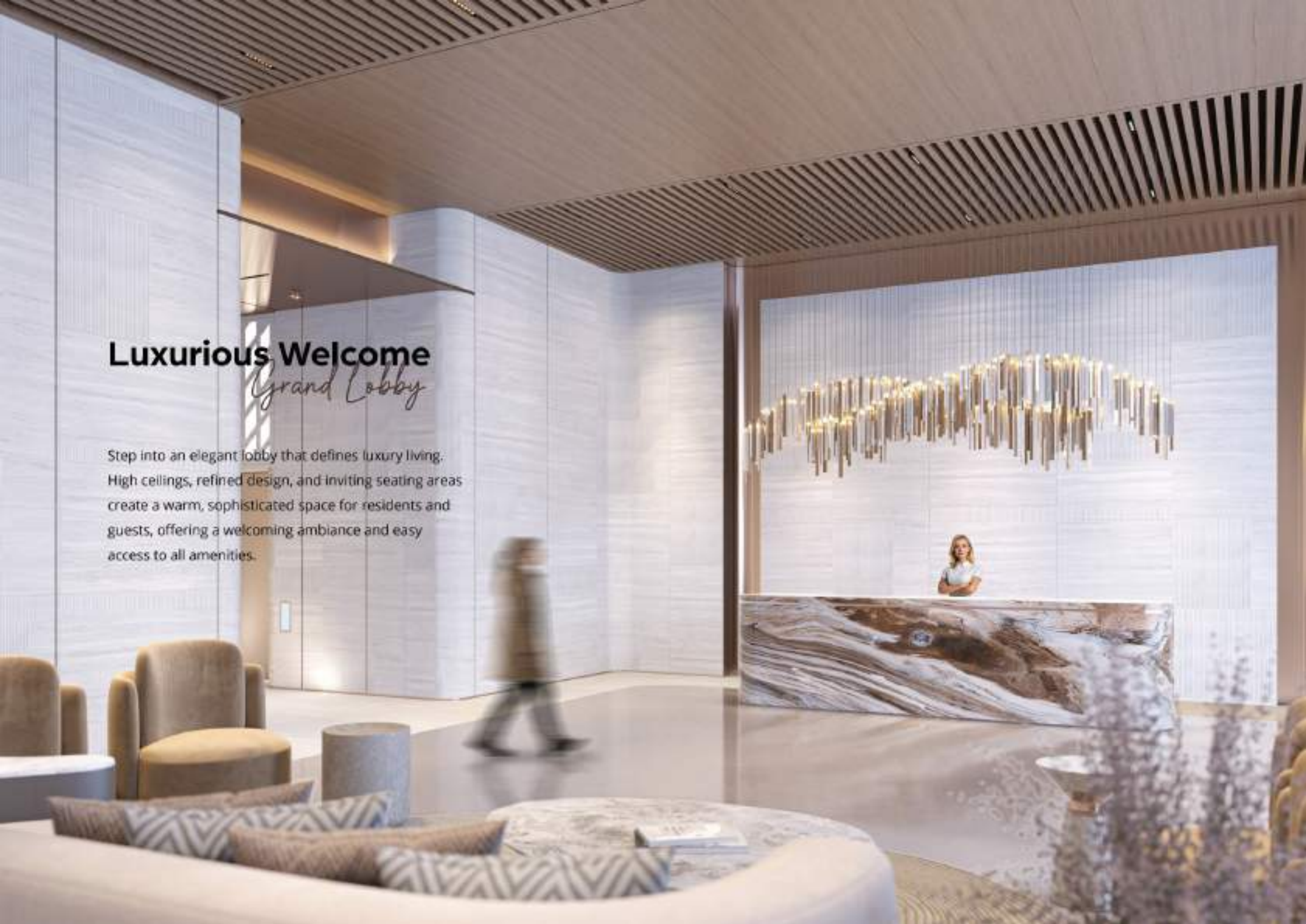


**Nourishing Body**  
*Mind, and Soul*



## Luxurious Welcome *Grand Lobby*

Step into an elegant lobby that defines luxury living. High ceilings, refined design, and inviting seating areas create a warm, sophisticated space for residents and guests, offering a welcoming ambiance and easy access to all amenities.





## Elegant Interiors

*Crafted for Living*

Step into interiors that blend elegance and comfort seamlessly. Every corner is designed with premium finishes and quality materials. Enjoy modern kitchens, chic bathrooms, and abundant natural light from expansive windows, creating a warm and sophisticated living experience.





## Effortless Transition

*Inviting Corridor*

Move through thoughtfully crafted corridors that offer a calming, seamless journey throughout the property. With gentle lighting, smooth textures, and contemporary finishes, these hallways provide a serene and welcoming atmosphere, guiding you comfortably from your residence to the shared spaces.





**A Space to Unwind**  
*Living Room*

Designed for comfort and style, the spacious living room features modern design, large windows for natural light, and premium materials. It's an inviting space perfect for relaxing, entertaining, or enjoying time with family.



## Tranquil Escape *Dreamy Bedroom*

This peaceful haven features spacious layouts and soft colors, while large windows fill the room with natural light, creating an uplifting atmosphere. With premium materials and comfortable furnishings, this serene retreat is perfect for relaxation, ensuring restful nights and rejuvenating mornings.



## Elegance in Detail

### *Luxurious Bathrooms*

Experience a blend of sophistication and functionality in our meticulously designed bathrooms. Featuring high-quality fixtures, premium materials, and elegant finishes, each space is crafted to offer comfort and style. From sleek vanities to spacious layouts, these bathrooms redefine modern living with a touch of luxury.



# Signature Details

*Luxe Materials*

## Entrance



Walls - Wood Veneer



Walls - Brown Tinted Glass



Wall Art - Brown Wood



Luxury Wall Paper



Wall & Ceiling Special White Paint



Flooring - Crema Marble



Warm Bronze - Stainless Steel Reflective Marble



Warm Bronze Stainless Steel - Brush Finish

## Apartment



Furniture Fabric - 2



Wall & Ceiling Special White Paint



Bronze Mixers



Furniture Fabric



Kitchen & Bathroom Travertine Marble



Luxury Chandelier



Wall Light Gray Wallpaper



High Quality Laminated Wood



Wardrobe Doors Brown Tinted Glass



Furniture Green Marble



Furniture - Brown Calacatta Marble



Flooring - Crema Marble



Dark Bronze - Stainless Steel Brush Finish



Warm Bronze - Stainless Steel Reflective Marble

\* The images (only) shown are for illustrative purposes and may not accurately represent the actual materials used in the project.

Floor Plan A

# 1<sup>st</sup> Floor

- Studio
- One Bedroom



Floor Plan A

# 2<sup>nd</sup> to 5<sup>th</sup> Floor

- Studio
- One Bedroom
- Two Bedroom



Floor Plan A

# 6<sup>th</sup> to 13<sup>th</sup>, 15<sup>th</sup> to 26<sup>th</sup> Floor

- Studio
- One Bedroom
- Two Bedroom





Floor Plan B

# 6<sup>th</sup> to 13<sup>th</sup>, 15<sup>th</sup> to 26<sup>th</sup> Floor

- Studio
- One Bedroom
- Two Bedroom



SOME OF OUR  
**COMPLETED PROJECTS**



**Nobles Tower**  
Business Bay



**The Square Tower**  
JVC, DUBAI



**O2 Tower**  
JVC, DUBAI



**Regina Tower**  
JVC, DUBAI



**Lake City Tower**  
JVC, DUBAI

SOME OF OUR  
**COMPLETED PROJECTS**



**Al Jawahara Tower**  
JVT, Dubai



**Marina Pinnacle Tower**  
Dubai Marina



**Al Manarah Tower**  
JVT Dubai



**The V Tower**  
Dubai Land

# ONGOING CONSTRUCTIONS



**Tiger Sky Tower**  
Business Bay, Dubai



**Jade Tower**  
Majan, Dubai



**Faradis Tower**  
Sharjah



**Red Square**  
JVT, Dubai

# ONGOING CONSTRUCTIONS



**Volga Tower**

JVT, Dubai



**Renad Tower**

Abu Dhabi



**Lilium Tower**

JVT, Dubai



**Altai Tower**

JVT, Dubai

# ONGOING CONSTRUCTIONS



**Elbrus Tower**

JVT, Dubai



**Sesilia Tower**

JVT, Dubai



**Cloud Towers**

JVT, Dubai



**Neva Residences**

JVC, Dubai

# DECADES OF ACHIEVEMENTS

**45+ Years**

*of Building Trust*

**270+**

*Completed Projects*

**40+ Companies**

*Driving Innovation*

